

LINE ITEM	DOCUMENT NUMBER	PART NUMBER	DESCRIPTION	QUANTITY PER VARIATION	
1	1	B-PL-TU58-D-0	OTU58-DB	TU58-EA,-EB,-EX RACK MOUNTING KI	1
2	2	B-PL-TU58-E-2	OTU58-EB	TU58-EX(DUAL DRIVE UNIV PWR)+TU5	1

REVISION HISTORY		BASIC PART NO: OTU58		DRN:	D. HEALY	DATE:	20-MAY-80	DIGITAL			
ENG	ECD NUMBER	REV	SECTION A OF A	CHK'D:	. HEALY	DATE:	20-MAY-80	TITLE PARTS LIST			
---	INITIAL	A	SECTION, VARIATION INDEX	CHK'D:	. HEALY	DATE:	20-MAY-80	TU58-D-ASSY			
JB	TU58-D-ML001	B	[A] DA	DES.ENG.:	JEFF BEAN	DATE:	20-MAY-80	DOCUMENT NUMBER			
			[B]	RESP.ENG.:	JIM WALLS	DATE:	19-JUN-80	SIZE	CODE	NUMBER	REV
			[C]	MFG.ENG.:	AMOS SNELL	DATE:	19-JUN-80	K	FL	TU58-D-DBP	B
			[D]	ASSEMBLY NUMBER:		TOP DOCUMENT NUMBER:		FILE NAME:		EDIT #	
			[E]	#NONE		#B-DD-TU58-D		Z1477B.PLS		8	
			[F]								

"THIS DRAWING AND SPECIFICATIONS HEREIN, ARE THE PROPERTY OF DIGITAL EQUIPMENT CORPORATION AND SHALL NOT BE REPRODUCED OR COPIED OR USED IN WHOLE OR IN PART AS THE BASIS FOR THE MANUFACTURE OR SALE OF ITEMS WITHOUT WRITTEN PERMISSION. COPYRIGHT (C) 1980, DIGITAL EQUIPMENT CORPORATION"

PARTS LIST

LINE ITEM	DOCUMENT NUMBER	PART NUMBER	DESCRIPTION	QUANTITY PER VARIATION
				00
1	C-MD-7422486-0-0	7422486-00	BEZEL,REWORK FOAM	1
2	D-IA-7424382-0-0	7424382-00	BRKT, MOUNTING	1
3	D-IA-7424382-0-0	7424382-01	BRKT MOUNTING L.H.	1
4	D-MD-7424381-0-0	7424381-00	BRKT, SUPPORT	2
5	C-MD-7424678-0-0	7424678-00	BRKT, SUPPPORT (L.H.)	1
6	C-MD-7424678-0-0	7424678-01	BRKT, SUPPORT (R.H.)	1
7		9006073-03	SCREW,TRUS,PHIL, 10-32X 1/2	20
8		9006636-00	WASHER,LOCK,INT,.3800D X .200ID	20
9		9006565-00	NUT,KEP , 10-32X 3/8 AF	6
10		9008487-00	RETAINER, BALL STUD	2
11		9010036-00	SCREW, SLOTTED HEX. HEAD 4 X 5/1	4
12		9006632-00	WASHER,LOCK,INT,.2600D X .120ID	4
13		9008149-00	STUD, BALL, 6-32 X .155, .187 DI	2
14		9007786-00	RETAINER, U-NUT, 10-32	12
15		9006633-00	WASHER,LOCK,INT,.2800D X .146ID	2
16	A-SP-3700582-0-0	3700582-00	PKG KIT OPTION 7017835 RACK MTG	1

REVISION HISTORY		BASIC PART NO: 7017835		DRN: JEFF BEAN		DATE: 20-MAY-80		D I G I T A L			
ENG	ECO NUMBER	REV	SECTION A OF A	CHK'D:		DATE:	TITLE	PARTS LIST			
---	INITIAL	A	SECTION. VARIATION INDEX	CHK'D:	D. HEALY	DATE:	20-MAY-80	RACK MOUNT KIT (TU58)			
JB	TU58-D-ML001	B	[A] 00	DES.ENG.:	JEFF BEAN	DATE:	02-JUN-80	DOCUMENT NUMBER			
			[B]	RESP.ENG.:	JIM WALLS	DATE:	19-JUN-80	SIZE	CODE	NUMBER	REV
			[C]	MFG.ENG.:	AMOS SNELL	DATE:	19-JUN-80	K	PL	7017835-0-DBP	B
			[D]	ASSEMBLY NUMBER:		TOP DOCUMENT NUMBER:		FILE NAME:	EDIT #		
			[E]	E-AD-7017835-0-0		B-PL-TU58-D-0		Z1478B.PLS	11		
			[F]	*THIS DRAWING AND SPECIFICATIONS HEREIN, ARE THE PROPERTY OF DIGITAL EQUIPMENT CORPORATION AND SHALL NOT BE REPRODUCED OR COPIED OR USED IN WHOLE OR IN PART AS THE BASIS FOR THE MANUFACTURE OR SALE OF ITEMS WITHOUT WRITTEN PERMISSION.							
COPYRIGHT (C) 1980, DIGITAL EQUIPMENT CORPORATION *											

FIND NO.	DRAWING NO.	DESCRIPTION	TYPE	FIND NO.	DRAWING NO.	DESCRIPTION	TYPE
1	MP01063	RACK MTG ASSY TU58-DA (PRINT SET ORDER NO.)	-				
	B-TC-TU58-D-1	RACK MTG ASSY TU58-DA (FIELD MAINT. PRINT SET)	-				
	K-PL-TU58-D-DBP	TU58 BOX & RACK ASSY	E/M				
2	E-AD-7017835-0-0	RACK MOUNT KIT	M				
	K-PL-7017835-0-DBP	RACK MOUNT KIT (PL)	M				
	C-MD-7422486-0-0	BEZEL, FOAM, TU58	M				
	D-IA-7424382-0-0	BRACKET, MOUNTING	M				
	D-MD-7424381-0-0	BRACKET, SUPPORT	M				
	C-MD-7424678-0-0	BRACKET, SUPPORT	M				
	A-SP-3700582-0-0	PACKING INSTRUCTIONS (DB)					
3	A-SP-3700606-0-0	PACKAGING INSTRUCTIONS (DA)	M				
4	B-PL-TU58-E-2	TU58 BOX ASSEMBLY (TU58-EB)	E/M				
	D-UA-EC20Y-0-0	I/O CABLE	E/M				
	D-UA-BC20Z-0-0	I/O CABLE	E/M				
5	B-DD-TU58-E	POWERED DUAL DRIVE ASSY	E/M				
6	B-PL-7016753-0-0	INSTALLATION ASSY (KIT)	M				
	C-MD-7422173-0-0	BRACKET, MOUNTING	M				
7	B-DD-TU58-K	MEDIA CARTRIDGE	E/M				
8	B-PL-TU58-D	RACK MTG ASSY TU58 (SHIPPING LIST)	E/M				

TYPE: E ELECTRICAL
M MECHANICAL
E/M ELECTRO/MECHANICAL



TITLE

RACK MOUNT ASSY TU58

SHEET 2 OF 2

SIZE CODE
B DD

NUMBER
TU58-D

REV
B

DIGITAL EQUIPMENT CORPORATION PARTS LIST

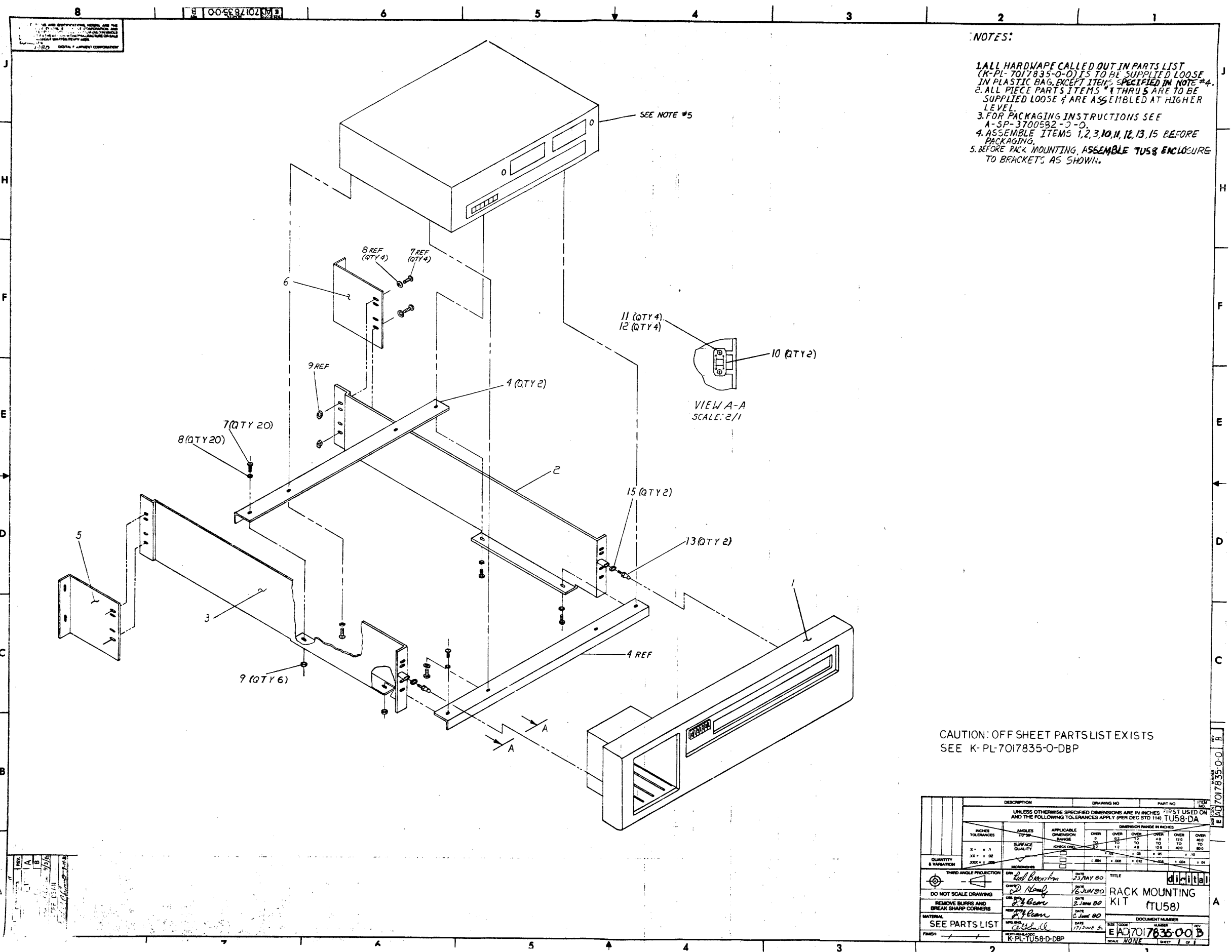
QUANTITY / VARIATION

NOTES: 1. ITEM 8 (VARIATION TAG) IS LOOSE PIECE AND IS TO BE INSTALLED ADJACENT TO SERIAL TAG.
2. DISCORD ANY OTHER VARIATION TAG.

MADE BY D. HEALY DATE 17 JUN 80	CHECKED <i>D Healy</i> DATE 19 JUN 80	SECTION 1
ENG DATE <i>Jeff Bean 19 JUNE 80</i>	PROD DATE <i>AMOS SMELL (Q.B.) 19 JUNE 80</i>	ISSUED SECTION 1

ITEM NO.	DRAWING NO.	PART NO.	DESCRIPTION	TU58-DA	TU58-DB																REF DESIGNATION
1	B-TC-TU58-D-1	MP01063	PRINT SET TU58-DA	-	1																
2	E-AD-7017835-0-0	7017835-00	RACK MOUNT KIT (TU58)	-	1																
3	E-UA-TU58-E-0	TU58-EX	POWERED DUAL DRIVE ASSY	1	-																
4	B-PL-TU58-E-2	TU58-ED	ACCESSORY KIT	1	-																
5	A-SP-3700606-0-0	3700606-00	PACKAGING INSTRUCTIONS (TU58-DA)	1	-																
6	B -PL-TU58-D	TU58-DB	RACK MOUNT KIT AND ACCESSORIES	1	-																
7	A-SP-3700582-0-0	3700582-00	PACKAGING INSTRUCTIONS	-	1																
8	A-PS-3615946-0-0	3615946-00	VARIATION TAG	-	1																

E.C.O. NO.	INIT.	ML001	TITLE	ASSY NO.	SIZE	CODE	NUMBER	REV.
			TU58-DA SHIPPING LIST	NONE	B	PL	TU58-D	B
<p style="font-size: small;">"THIS DRAWING AND SPECIFICATIONS, HEREIN, ARE THE PROPERTY OF DIGITAL EQUIPMENT CORPORATION AND SHALL NOT BE REPRODUCED OR COPIED OR USED IN WHOLE OR IN PART AS THE BASIS FOR THE MANUFACTURE OR SALE OF ITEMS WITHOUT WRITTEN PERMISSION. COPYRIGHT © 1980 DIGITAL EQUIPMENT CORPORATION"</p>			SHEET 1 OF 1	INSERTION PARTS LIST DATA BASE REV				



NOTES:

1. ALL HARDWARE CALLED OUT IN PARTS LIST (K-PL-7017835-0-0) IS TO BE SUPPLIED LOOSE IN PLASTIC BAG, EXCEPT ITEMS SPECIFIED IN NOTE #4.
2. ALL PIECE PARTS ITEMS #1 THRU 5 ARE TO BE SUPPLIED LOOSE & ARE ASSEMBLED AT HIGHER LEVEL.
3. FOR PACKAGING INSTRUCTIONS SEE A-SP-3700592-0-0.
4. ASSEMBLE ITEMS 1, 2, 3, 10, 11, 12, 13, 15 BEFORE PACKAGING.
5. BEFORE RACK MOUNTING, ASSEMBLE TU58 ENCLOSURE TO BRACKETS AS SHOWN.

CAUTION: OFF SHEET PARTSLIST EXISTS
SEE K-PL-7017835-0-DBP

REV. A
DATE: 11/26/56

DESCRIPTION	DRAWING NO		PART NO		ITEM NO					
UNLESS OTHERWISE SPECIFIED DIMENSIONS ARE IN INCHES FIRST USED ON AND THE FOLLOWING TOLERANCES APPLY (PER DEC STD 114) TU58-DA										
INCHES TOLERANCES	ANGLES	APPLICABLE DIMENSION RANGE	DIMENSION RANGE IN INCHES							
			OVER .00	OVER .01	OVER .02	OVER .03	OVER .04	OVER .05	OVER .06	OVER .07
SURFACE QUALITY		SURFACE QUALITY								
QUANTITY & VARIATION		QUANTITY & VARIATION								
THIRD ANGLE PROJECTION	DATE	DATE		DATE						
DO NOT SCALE DRAWING	DATE	DATE		DATE						
REMOVE BURRS AND BREAK SHARP CORNERS	DATE	DATE		DATE						
SEE PARTS LIST	DATE	DATE		DATE						
FINISH	DATE	DATE		DATE						
TITLE		TITLE								
RACK MOUNTING KIT (TU58)		RACK MOUNTING KIT (TU58)								
DOCUMENT NUMBER		DOCUMENT NUMBER								
EAD7017835-00-B		EAD7017835-00-B								
SHEET 1 OF 1		SHEET 1 OF 1								